

3-PACK

USE RESTRICTIONS:

DO NOT USE THIS PRODUCT OUTDOORS OR IN AREAS ACCESSIBLE TO CHILDREN, PETS, DOMESTIC ANIMALS, OR NON-TARGET WILDLIFE.

This product may only be used to control the following rodent pests in man-made structures: House mouse (*Mus musculus*), Eastern harvest mouse (*Reithrodontomys humuli*), Golden mouse (*Ochrotomys nuttalli*), and Meadow vole (*Microtus pennsylvanicus*). Examples of such structures include homes and other permanent or temporary residences, food processing facilities, industrial and commercial buildings, agricultural and public buildings, transport vehicles, (ships, trains, aircraft), port or terminal buildings and related structures around and associated with these sites.

SELECTION OF TREATMENT AREAS: Determine areas where house mice will most likely find and consume the bait. Generally, these areas are along walls, by gnawed openings, in or beside burrows, in corners and concealed places, between floors and walls, or in locations where rodents or their signs have been seen. Remove as much alternative food as possible.

APPLICATION DIRECTIONS:

MICE: Place a single unit at each placement location. Space placements at 8 to 12 foot intervals. Replace units if contents are consumed or contaminated, or if units are severely damaged. If units are untouched after three days, move to new locations consistent with label text. Maintain an uninterrupted supply of fresh bait for at least 15 days or until there are no longer signs of new feeding by house mice.

FOLLOW-UP: Replace contaminated or spoiled bait immediately. Using waterproof gloves collect and dispose of all dead, exposed animals and leftover bait properly. To discourage reinfestation, limit sources of rodent food, water and harborage as much as possible. If reinfestation does occur, repeat treatment.



MADE IN USA



Manufactured for:
Central Garden & Pet Company
1501 E. Woodfield Rd. Suite 200 W
Schaumburg, IL 60173
Item: 100525552
16-10078
RM: 99.0002699.00

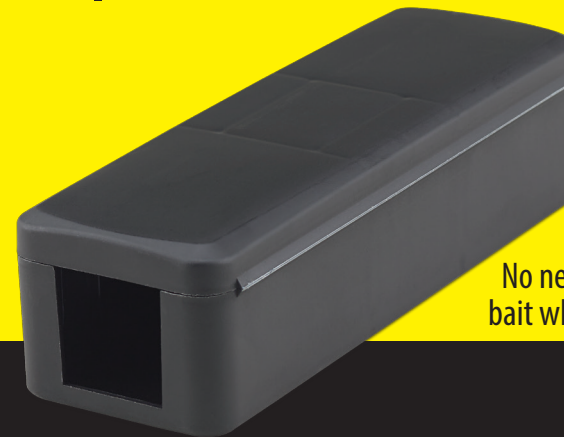
©2016 Farnam Companies, Inc.

Rodentex is a trademark of Wellmark International. Central Garden & Pet with design is a trademark of Central Garden & Pet Company.

- ◆ Pre-Baited
- ◆ Disposable
- ◆ Two openings for mice to readily enter and feed on bait inside

KILLS | MICE

THIS BAIT STATION IS NOT TAMPER-RESISTANT
Use Indoors Only in Areas Inaccessible to Children and Pets



No need to touch bait when applying

ACTIVE INGREDIENT:

Diphacinone (2-Diphenylacetyl-1,3-Indandione) 0.005%

OTHER INGREDIENTS: 99.995%

TOTAL: 100.000%

EPA Reg. No. 61282-19-89459
EPA Est. No. 61282-WI-01

NET CONTENTS: 3 Pre-Loaded Bait Stations Containing 1 Ounce of Bait Each
NET WEIGHT: 3 ounces



KEEP OUT OF REACH OF CHILDREN CAUTION

PRECAUTIONARY STATEMENTS

HAZARDS TO HUMANS AND DOMESTIC ANIMALS

CAUTION: Bait block is harmful if swallowed or absorbed through the skin. Causes moderate eye irritation. Avoid contact with eyes, skin, or clothing. Keep away from children, domestic animals and pets. Any person who retrieves carcasses or unused bait following application of this product must wear waterproof gloves. If bait is touched, wash hands thoroughly as soon as possible.

FIRST AID HAVE LABEL WHEN OBTAINING TREATMENT ADVICE	
If Swallowed:	<ul style="list-style-type: none"> • Call a poison control center, or doctor, or 1-800-234-2269 immediately for treatment advice. • Have person sip a glass of water if able to swallow. • Do not induce vomiting unless told to do so by the poison control center or doctor.
If on Skin or Clothing:	<ul style="list-style-type: none"> • Take off contaminated clothing. • Rinse skin immediately with plenty of water for 15-20 minutes. • Call a poison control center, or doctor, or 1-800-234-2269 immediately for treatment advice.
If in Eyes:	<ul style="list-style-type: none"> • Hold eye open and rinse slowly and gently with water for 15-20 minutes. • Remove contact lenses, if present, after the first 5 minutes, then continue rinsing eye. • Call a poison control center, or doctor, or 1-800-234-2269 immediately for treatment advice.
NOTE TO PHYSICIAN If swallowed, this material may reduce the clotting ability of the blood and cause bleeding. If ingested, administer Vitamin K ₁ , intramuscularly or orally. Repeat as necessary based on monitoring of prothrombin times.	
TREATMENT FOR PET POISONING If animal eats bait, call veterinarian or 1-800-234-2269 at once.	
NOTE TO VETERINARIAN Anticoagulant Diphacinone: For animals ingesting bait and/or showing poisoning signs (bleeding or elevated prothrombin times), give Vitamin K ₁ .	
For 24-hour emergency information on this product, call 1-800-234-2269	

ENVIRONMENTAL HAZARDS

This product is extremely toxic to mammals, birds and other wildlife. Dogs, cats and scavenging mammals and birds might be poisoned if they feed upon animals that have eaten this bait. Do not apply this product outdoors.

DIRECTIONS FOR USE

It is a violation of Federal law to use this product in a manner inconsistent with its labeling.

READ THIS LABEL: Read this entire label and follow all use directions and use precautions. Use only for the sites, pests, and application methods described on this label.

IMPORTANT: Do not expose children, pets or other non-target animals to rodenticides. To help to prevent accidents:

1. Store product not in use in a location out of reach of children and pets.
2. Apply bait in locations out of reach of children, pets, domestic animals and non-target wildlife.
3. Dispose of product container, and unused, spoiled, and unconsumed bait as specified on this label.

STORAGE AND DISPOSAL

STORAGE: Store only in original container in a dry place inaccessible to children and pets.

DISPOSAL: Nonrefillable container. Do not reuse or refill this container.

If empty: Place in trash or offer for recycling if available.

If partly filled: Call you local solid waste agency for disposal instructions. Never place unused product down any indoor or outdoor drain. Place in trash or offer for recycling if available.

DISCLAIMER

DISCLAIMER: To the extent permitted by applicable law, seller makes no representation or warranty, either express or implied, for results due to misuse, improper handling or improper storage of this material. Nor does Seller assume any responsibility for injury to persons, crops, animals, soil or property arising out of misuse, improper handling or improper storage of this material.

For non-emergency (e.g., current product information), Call:
1-800-234-2269